

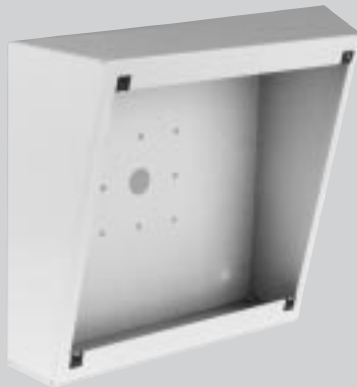
# Quam

## SE1WVP/SE2WVP

### Vandal-Proof Surface Mount Enclosures



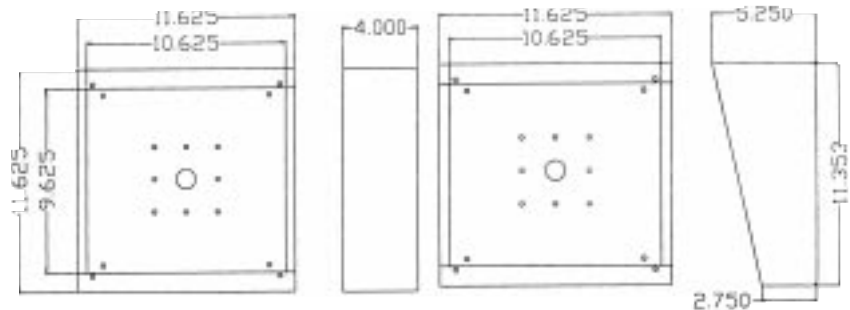
SE1WVP



SE2WVP

These speaker enclosures are designed for applications that require external mounting and are constructed of a single piece of .060" cold rolled steel, which is folded and welded for the ultimate in vandal protection. They are coated with the same white powdered epoxy finish as Quam vandal-proof baffles. The thickness and stiffness of the steel construction eliminates the need for internal damping.

Model SE1WVP for ceiling or wall mounting is 4" deep. Model SE2WVP for wall mounting is slanted from a depth of 5.25" at the top to 2.75" at the bottom. Baffle models BS8W and BS8WS are recommended for commercial applications, and the BS8VP (with tamper-proof screws) is recommended where vandal protection is required. These baffles will accept any 8" speaker/transformer combination.



#### Features

- Thickness of box deadens sound-no damping required
- Surface Mountable
- Cold Rolled Steel .060 thick
- Attractive White Powdered Epoxy Finish
- In Stock for Immediate Shipment

#### Architects & Engineers Specifications

The protective square steel surface mounted enclosure shall be Quam Model SE1WVP (SE2WVP). This enclosure shall be of coated, one-piece .060" steel, folded and welded. The enclosure shall accommodate Quam square baffles BS8W, BS8WS and BS8VP or approved equal.



Quam-Nichols Company

234 East Marquette Road • Chicago, IL 60637  
(773) 488-5800 • FAX (773) 488-6944



Member



TS-47B